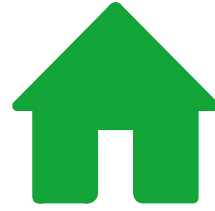


# OUTLET

## RESIDENTIAL



## The Copse

London E4 6BH

- First floor maisonette
- Quiet cul-de-sac
- Balcony
- Loft
- Whitehall Plain nearby
- Garden
- Backing woodland
- Two double bedrooms
- Chingford station walking distance
- No chain

Asking Price £340,000

# The Copse

London E4 6BH



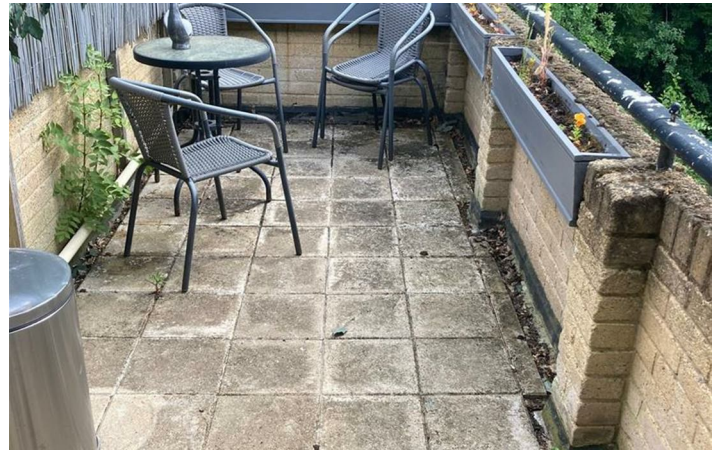
For sale is this first floor maisonette with balcony and it's own section of a level and child friendly rear garden in backing onto woodland in Chingford.

The property, which is located in a quiet cul-de-sac, offers a reception room, fitted kitchen/breakfast room with a door leading onto the rear balcony, two double bedroom and a bathroom.

Chingford (overground) station is within comfortable walking distance and provides regular services at under thirty minutes journey time into Liverpool Street station whilst the open space of nearby Whitehall Plain is popular among walkers.



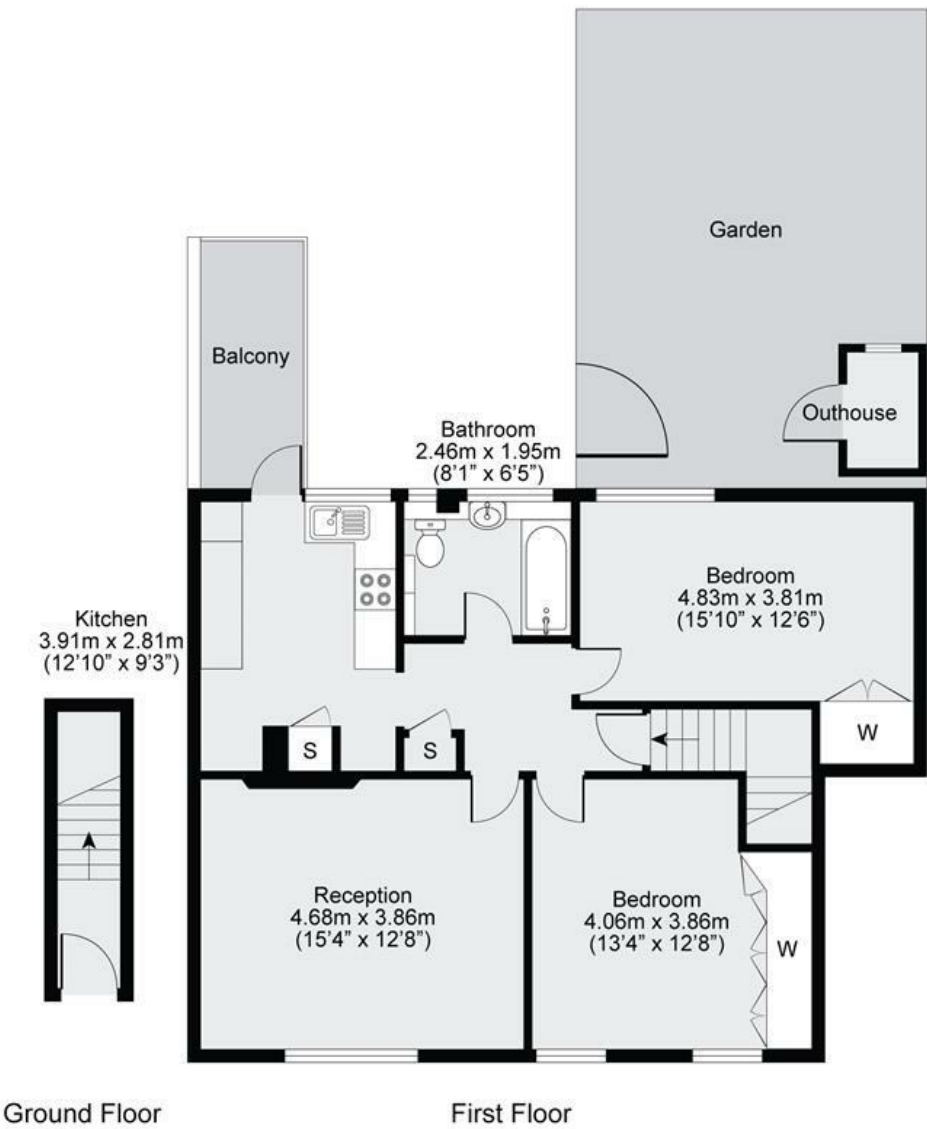
Directions





The Copse, E4

Approx. Gross Internal Area = 79.2sqm / 852.5sqft



Disclaimer: Floorplan measurements are approximate and are for illustrative purposes only. While we do not doubt the floorplan accuracy and completeness, you or your advisors should conduct a careful, independent investigation of the property in respect of monetary valuation.



These particulars, whilst believed to be accurate are set out as a general outline only for guidance and do not constitute any part of an offer or contract. Intending purchasers should not rely on them as statements of representation of fact, but must satisfy themselves by inspection or otherwise as to their accuracy. No person in this firm's employment has the authority to make or give any representation or warranty in respect of the property.

